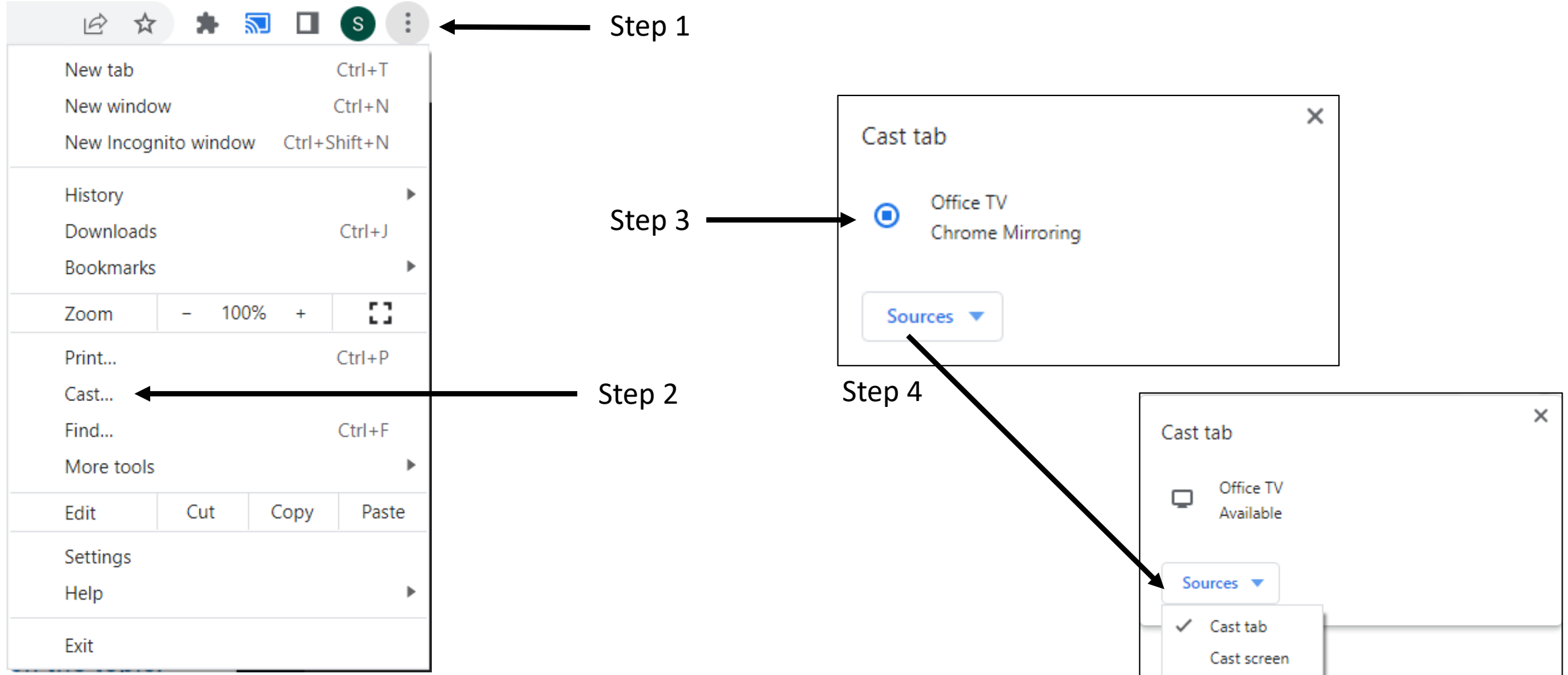


# The Sky Lounge: Two Options for Screen Sharing

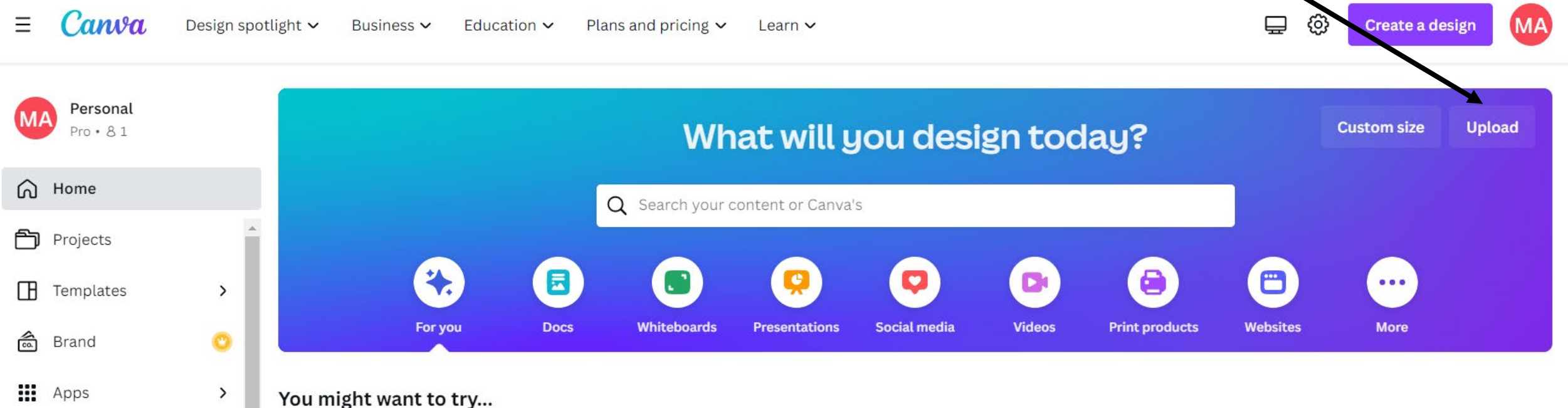
*Please make sure the TV is turned on (remote next to couch)  
and you are on the “maremp” WiFi*

**For anything in Chrome** (Marriner's preferred Web browser) – think Google share docs, websites, etc. – 1) click on the three little icons next to your account info; 2) select “Cast”; 3) select “Office TV”; 4) use the “Sources” drop down to begin sharing the tab or whole screen



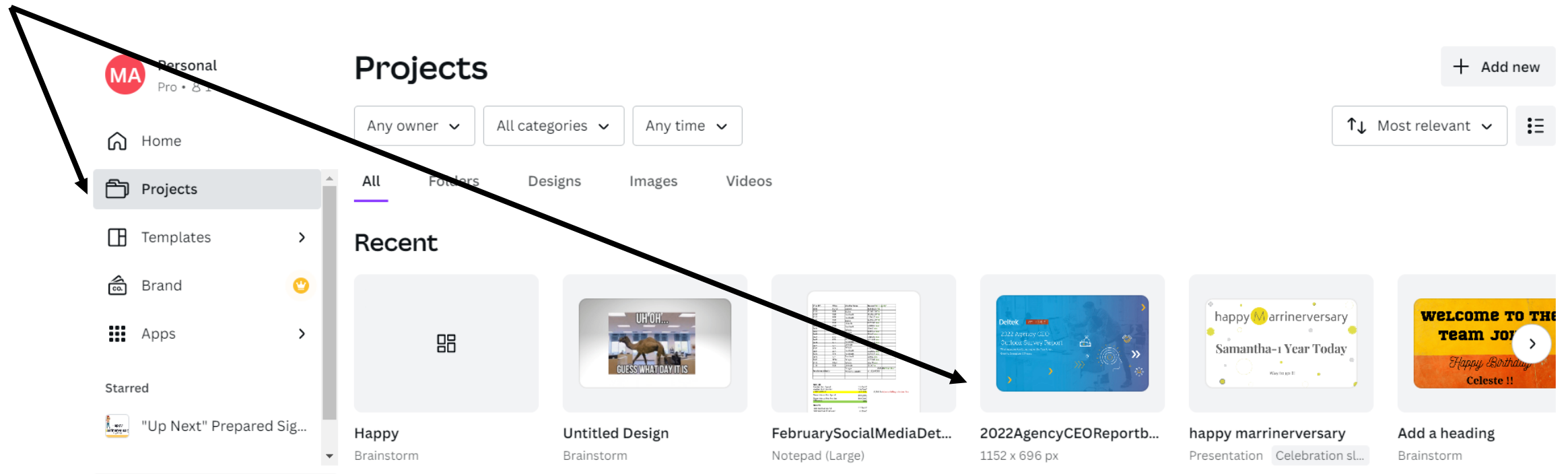
**For all other items** – 1) log in to [www.canva.com](https://www.canva.com) with our account info ([dawnw@marriner.com](mailto:dawnw@marriner.com); admin10221); 2) upload your document; 3) find in Projects, double click on document; 4) follow the same steps as outlined for Chrome applications

Step 2

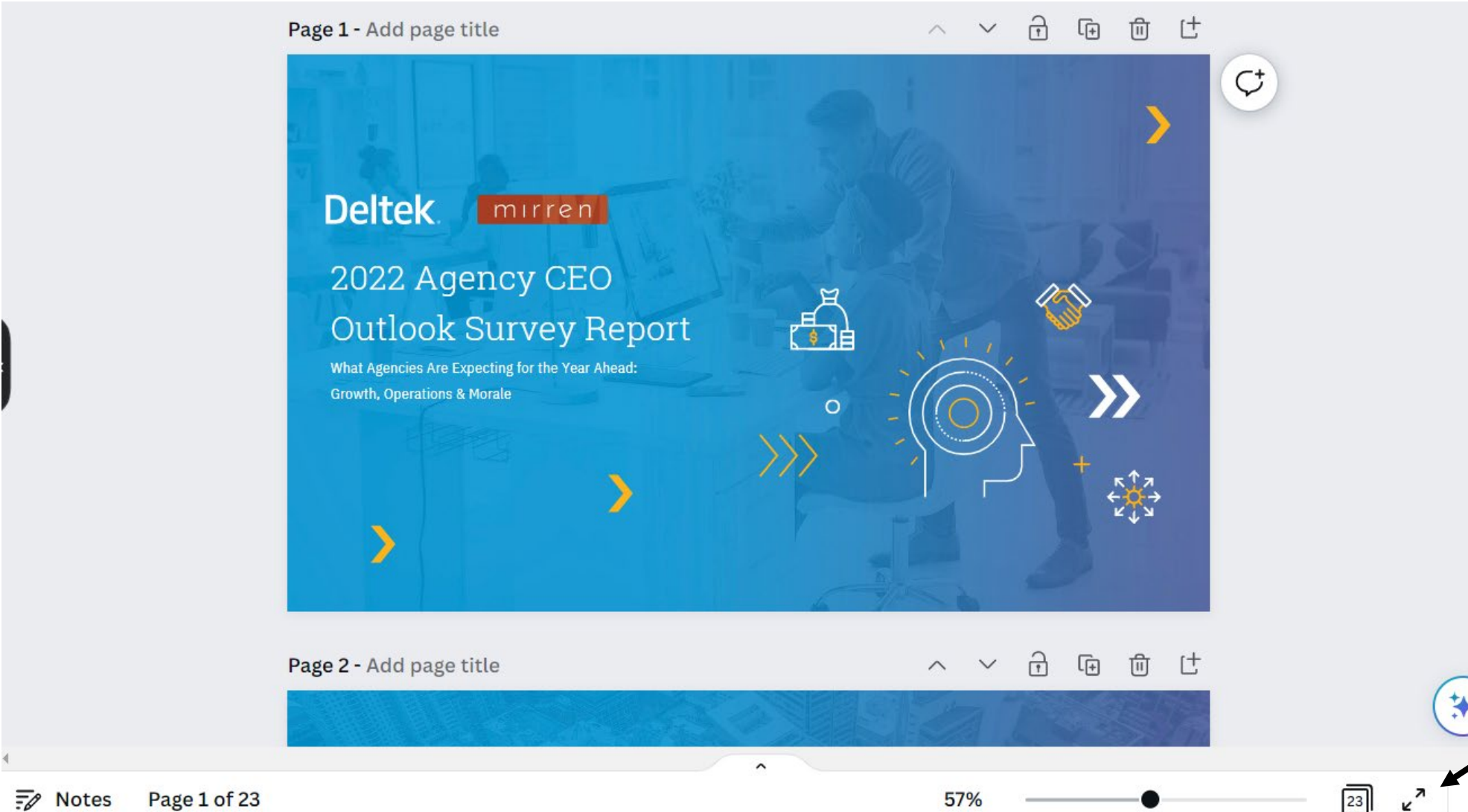


**For all other items** – 1) log in to [www.canva.com](https://www.canva.com) with our account info ([dawnw@marriner.com](mailto:dawnw@marriner.com); admin10221); 2) upload your document; 3) find in Projects, double click on document; 4) follow the same steps as outlined for Chrome applications

Step 3



## Helpful Tip in Canva



After Starting  
Sharing, Click  
Here to  
Make Document  
Full Screen



Questions? Want to do a test?

*Please see Susan or Dawn 😊*